



Flat (A), 67 Albert Street, Camden Town, London, NW1 7LX

£2,166 PCM

- A SPACIOUS ONE DOUBLE BEDROOM GARDEN FLAT
- TILED FAMILY BATHROOM SUITE
- SOLE USE OF PATIO GARDEN
- REGENTS PARK & PRIMROSE HILL ARE BOTH NEARBY
- LARGE RECEPTION ROOM
- CLOSE PROXIMITY OF MORNINGTON CRESCENT & CAMDEN TOWN

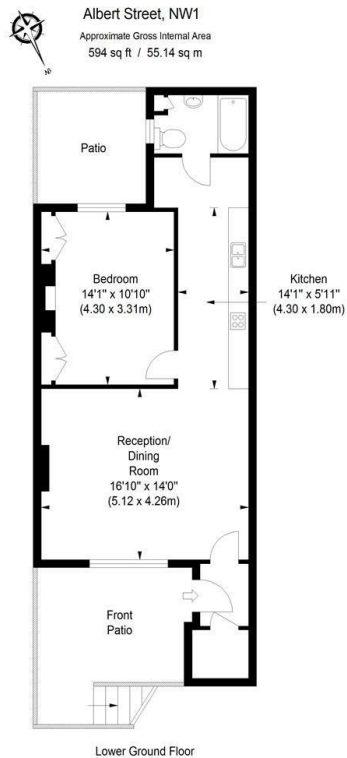
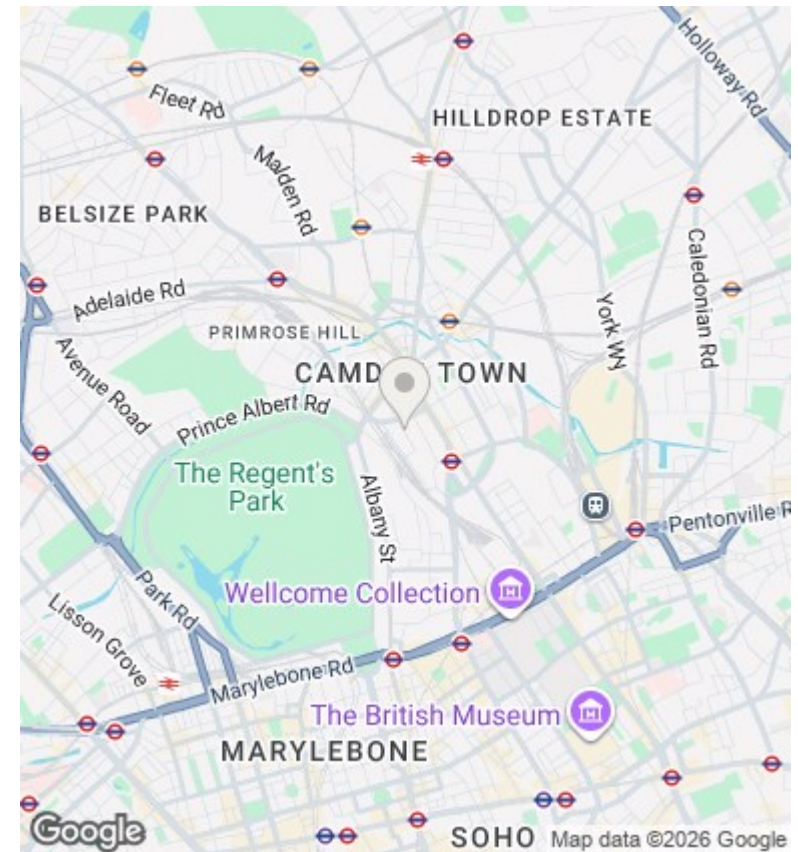


ILLUSTRATION FOR IDENTIFICATION PURPOSES ONLY

ALL MEASUREMENTS ARE MAXIMUM, AND INCLUDE WINDOW BAYS AND WARDROBES WHERE APPLICABLE
THIS PLAN MUST NOT BE REPRODUCED BY ANY OTHER PERSON WITHOUT PERMISSION



Viewings

Viewings by arrangement only. Call 020 7485 0112 to make an appointment.

Council Tax Band

C

EPC Rating:

C

Energy Efficiency Rating		Current	Potential
<i>Very energy efficient - lower running costs</i>			
(92 plus) A			
(81-91) B			
(69-80) C		72	78
(55-68) D			
(39-54) E			
(21-38) F			
(1-20) G			
<i>Not energy efficient - higher running costs</i>			
England & Wales		EU Directive 2002/91/EC	